

# Reopening IUFS



Steering Committee Meeting  
July 2, 2020

# Today's Agenda

1. Welcome and introductions
2. Reopening Committee process, roles and responsibilities
3. Planning timeline
4. Sub-committee reports and Steering Committee feedback
5. Goal for the July 13th Steering Committee meeting

# Committee Membership

Steering Committee			
	Position		Position
Kristopher Harrison	Superintendent	Mary Ellis	C&I Chair
Andrea Kantor	C&I Chair	Matthew Samuelson	Operations Chair
Brian Friedman	BOE	Michael Cerone	IPD
Carol Stein	Operations Chair	Michael Toolan	IPD
David Sottile	IMS Principal	Delina Codey	Parent
Gail Krieger	SEI Chair	Dympna Kenny	Parent
Gary Knowles	Director of Facilities	Francis Pignatelli	IPD
James Groven	IFA President	Katherine Hough	District Physician
Joyce Chapnick	SEL Chair	Michael Hanna	BOE
Juliet Gevargis-Mizimakoski	IHS Principal	David Graeber	BOE

# Committee Membership

Curriculum & Instruction					
Co-Chairs					
Mary Ellis	DO	ASI			
Andrea Kantor	DL	Principal			
Members					
Jason Strumwasser	DO	Director	Jennifer Lentini	IHS	IL
Susan Lockhart	DO	Asst Director	Ann Yee	IHS	Teacher
Liza Greenspan	DL	AP	James Groven	IHS	Teacher
Laura Lane	DL	IL	Larry Fata	IHS	Teacher
Amy Blackwell	DL	IL	Diana Cassidy	IHS	Teacher
Eileen Scanlon	DL	Teacher	David Sottile	IMS	Principal
Krystal Mitchell	DL	Teacher	Sara Rust	IMS	Inst Coach
Christine Rosner	DL/MSS	Inst Coach	Diana Tomaselli	IMS	Teacher
Nina Rossi	MSS	IL	Judy Nadler	IMS	Teacher
Julie Rostkowski	MSS	Teacher	Sara Savalli	IHS	Teacher
Laura Shaw	MSS	Teacher	Niki Grados		Parent
Susan Wallace	MSS	Teacher	Nicole Viggiano		Parent
Debra McCumber	IHS	IL	Brian Friedman		BOE

# Committee Membership

SEL					
Co- Chairs					
Joyce Chapnick	MSS	Principal			
Gail Krieger	PPS	Director			
Members					
Alissa Campbell	DL	School Counselor	Michele Barnattan	DL	Teacher
Amy Panitz	IMS	Teacher	Noreen Sabia	IHS	Psychologist
Diana Schmertz	IHS	Teacher	Rebecca Kruge	IHS	School Counselor
Gina Menendez	PPS	Social Worker	Susan Schermerhorn	PPS	Psychologist
Griffin Murray	IMS	School Counselor	Jenn Gallagher	MSS/IMS	Teacher
Julianna Michael	IMS	Psychologist	Michelle Sensi	MSS	Teacher
Kelly Kozak	IMS	Teacher	Juliet Gevargis-Mizimakoski	IHS	Principal
Liza Leite	IMS	School Counselor	Karen Arnett		Parent
Loren Holand	MSS	Teacher	Maggie Kadro		Parent
Meg Granfors	PPS	Psychologist	David Graeber		BOE
Allyson Daley	IMS	Assistant Principal			

# Committee Membership

Operations					
Co-Chairs					
Carol Stein	DO	ASB			
Matt Samuelson	IHS	AP			
Members					
Bernadette Fleming	DL	Nurse	Gary Knowles	DO	Facilities Director
Beth Basha	IHS	Nurse	Rich Pittore	Campus	Head Custodian
Corinne Daniels	DL	Teacher	Neil Cole	DL	Head Custodian
Evan Gross	DO	Other	Angel Aviles	MSS	Head Custodian
Hana Gross	IHS	Other	Doreen Morandi	DO	Clerical
Jeanine Hart	IHS	Teacher	Julie Orlando	IHS	Clerical
John Buonamano	DO	Administrator	Amy Falk	IHS	Teacher
Lovetta James	IHS	Teacher	Mavis Edme		Parent
Stephanie Korn	IMS	Nurse	Lara Ufer		Parent
Susan Lockhart	DO	Administrator	Michael Hanna		BOE
Yvonne Halee	MSS	Nurse			

# September 2020: How must we prepare?

Irvington UFSD must develop comprehensive plans for school operations come September. In doing so, the following must be considered:

- Health and safety of all students and staff
- CDC & NYSDOH guidance
- Governor's executive orders
- NYSED guidance



# The IUFSO Planning Process

To plan for the reopening of schools, the District shall facilitate an inclusive planning process that will consist of four (4) committees: one **Steering Committee** and three sub-committees that will focus on the following areas: **Curriculum and Instruction**, **Social and Emotional Well-Being** and **Operations** (health care, facilities, food services and transportation).

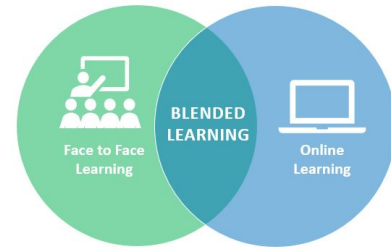


# Sub-committee Work Structure

The sub-committees will function in two different stages:

1. Internal Work Committees: School District staff will meet to outline initial priorities and needs. These plans will identify the needs and recommended strategies to support the educational process in each school. The sub-committee will then meet with the Extended Work Committee
2. Extended Work Committees: The Extended Work Committees will include representatives from the Board of Education and the PAC. This broader stakeholder committee shall provide feedback on the Internal Work Committee's planning and make recommendations for consideration.

# Committee Responsibilities



## Steering Committee:

The Steering Committee will be composed of District-level leaders and representatives of each of the three sub-committees. The Steering Committee's responsibility is to coordinate the efforts of the sub-committees to ensure alignment of planning and to provide feedback. The steering committee, through the Superintendent, will provide oversight of each sub-committee in partnership with the sub-committee chairpeople, ensure each sub-committee has the resources necessary to complete their work, develop a final plan for the reopening of school and coordinate communication with the IUFSD stakeholders.

## Curriculum & Instruction:

The Curriculum and Instruction Sub-Committee will develop recommendations for the Steering Committee's consideration to provide for the process of delivering instruction and the safe operations of schools. Such planning shall include three concepts of teaching and learning: on-site, distance learning and a hybrid approach.

# Committee Responsibilities



## Social & Emotional Learning (SEL):

The SEL Committee's responsibility is to identify and recommend structures, services and programs that will be necessary to support students *and* staff members upon the return to school in September regardless of whether teaching and learning will occur on site, through distance learning or a hybrid model.

## Operations:

The Operations Sub-Committee's responsibility is to consider and recommend steps that must be taken in the areas of health and safety, food services, transportation and facilities to support teaching and learning for on-site learning or through a hybrid model.

# Project Timeline

Activity	Date
Recruitment of Committee Members	Week of June 8, 2020
Initial Sub-Committee Meetings	Week of June 8, 2020
Sub-Committee Meetings	Week of June 8, 2020 through Week of July 13, 2020
Sub-Committee Reports Submitted to Steering Committee	By July 13, 2020
Development of Districtwide Reopening Plan	July 13, 2020 - July 24, 2020
Publication of Draft Reopening Plan	July 27, 2020
Public Presentation of Reopening Plan	July 28, 2020
Submit Reopening Plan to SED	~July 31, 2020



# Sub-committee Reports

# Curriculum & Instruction



Curriculum  
and  
Instruction

## Areas of Focus:

- Distance Learning
- Professional Learning
- Operations/Needs of Social Distancing
- Extra-curricular and co-curricular

# Curriculum & Instruction



Curriculum  
and  
Instruction

## Recommendations in Development:

- Schedules to Consider:
  - Staggered Attendance: morning/afternoon
  - Staggered Attendance: alternate days, multiple days, weeks
  - Maintain one day for meetings and collaboration
- Professional development in:
  - New health and safety procedures
  - SEL including creating online community
  - Technology
  - Best practices in remote learning
- Maintain access to specials, assemblies, trips where possible
- Increased parent outreach on how to support students learning at home

# Curriculum & Instruction



Curriculum  
and  
Instruction

## Questions/Concerns:

- Cost of transportation, replacement furniture, safety materials, etc.
- Safely providing all students with technology and instructional materials (on/off-site)
- Instructional time lost with multiple bus routes
- For students not in school, independent work or stream from classroom?
- Accountability for student learning at home
- Managing student and staff absences due to illness/exposure
- Impact of families of staggered attendance
- Engaging students in a remote environment
- Code of conduct/integrity in completing assignments and assessments
- Ability to realistically create a safe environment
- Managing staff and family anxiety about returning/refusals

# Social and Emotional Learning

## Areas of Focus:

- Curriculum and Instruction
- Schoolwide Practice and Policies
- Families and Community Partnerships
- Staff



# Social and Emotional Learning

## Recommendations in Development:

### Curriculum and Instruction

- Provide opportunities to connect with students and for students to connect with one another (develop relationships)
- Create a predictable setting and routine that includes breaks, scheduled talk time, etc.
- Consider equity issues, access to resources, family stressors, learning needs, trauma, etc.
- Consider the impact of masks on the ability to read emotions and facial expressions
- Teach skills in validation, acknowledging everyone has/ had a different experience from COVID-19, and not everyone in each school will be in the same place in recovery.
- Facilitate classroom meetings in collaboration with a school-employed mental health professional
- Facilitate evidence-based psychoeducational classroom lessons with school-employed mental health professionals



# Social and Emotional Learning

## Recommendations in Development:

### Schoolwide Practices and Policies

- Adopt a district-wide screener for each level and utilize our multi-tiered levels of support based on need
- Behavioral expectations/SEL competencies
- Positive behavioral reinforcement systems and/or disciplinary consequences
- System for screening/assessment/referrals for social-emotional-behavioral support - including self-referrals - explicit teaching into this - (tools to use - i.e. mood meter)
- Advisory or homeroom period for consistent adult connection
- Team meetings/staff meetings for processing and student check-ins - planning for student and staff self-care
- System for assessing effectiveness about supports - teacher and student feedback
- Using survey data, develop a system for identifying students/families at higher risk for trauma based on adverse experiences (i.e. loss of family member, family member out of work)
- System for ensuring equity
- School counselor works with students- Tier 1

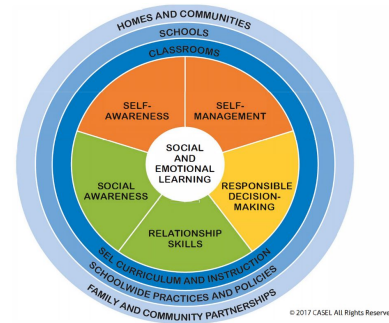


# Social and Emotional Learning

## Recommendations in Development:

### Family and Community Partnership

- Provide a survey, an opportunity for parents to share their concerns, worries, reservations of sending their children back to school.
- Follow-up parent groups/forums targeted on the concerns, worries, reservations voiced in the survey
- Clear and consistent protocols for safety (access masks, social distancing, schedule for learning, etc.)
- Targeted outreach through invitations to our disengaged families
- Equitable access to internet/chromebook
- Open House at every level to offer support related to the transition (Social Worker, Psychs, Counselors to speak to all attendees about the importance of our students' wellness, that needs to come before academics).

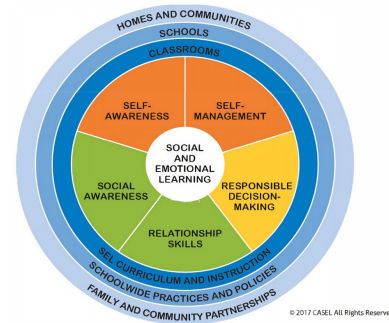


# Social and Emotional Learning

## Recommendations in Development:

### Staff

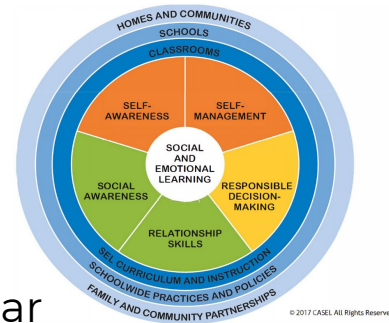
- Mental Health First Aid Training for Staff- concern over timing, funding and access
- Recognize and acknowledge life-changing experiences of faculty/staff as well as ongoing fears/anxiety/apprehension
- Norming self-care -part of the school culture
- Consider equity issues, access to resources, family stressors, learning needs, trauma, etc.
- Impact of pandemic and race/diversity issues in our school community
- Clear and consistent communication of protocols
- Access to appropriate safety materials- hand sanitizer, wipes, masks etc.
- Identifying the line between support and clinical/therapeutic intervention



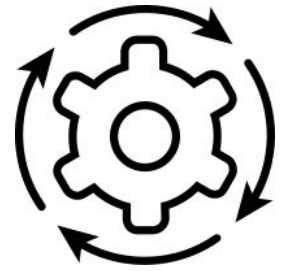
# Social and Emotional Learning

## Questions/Concerns:

- Narrowing down what's actually possible for SEL to begin the year
- Which learning model will we be in?
- What is our timeline for gathering information, developing a plan and implementation?
- Purchase of a SEL screening tool
- How do we make sure all students/families are connected and supported-engage our disengaged families?
- How will we support staff with their own SEL support? Where do we draw line?
- How do we provide PD for staff to support students with various approaches?



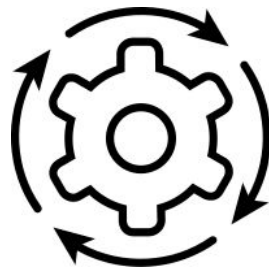
# Operations



## Areas of Focus:

1. **Health Protocols:** What structures will we use to maintain student and staff safety and what new protocols will we follow?
2. **Facilities:** How will the physical plant be sanitized and how will student and staff use of facilities change to ensure safety?
3. **Food Services:** How will students and staff access sanitary places to eat/congregate?
4. **Transportation:** How will students arrive and leave campuses?
5. **Traffic:**
  - a. **Automobile:** How will pick-up/drop-off be structured to minimize delays and provide equal access to school?
  - b. **Human:** How will pedestrian traffic (in school and out of school) be structured to provide safe travel?

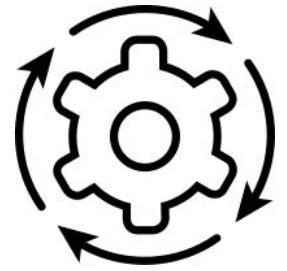
# Operations



## Recommendations in Development:

<b>Health</b> <ul style="list-style-type: none"><li>• Signage/Community Outreach</li><li>• Creation of Isolation Areas</li><li>• Training Videos</li><li>• Classroom medical support protocols</li><li>• Health Screenings/PPE</li></ul>	<b>Facilities</b> <ul style="list-style-type: none"><li>• Enhanced Cleaning Protocols</li><li>• Ordering Necessary Materials/PPE</li><li>• Areas to restrict usage, eg. lockers</li><li>• Signage/Community Outreach</li></ul>
<b>Food Services</b> <ul style="list-style-type: none"><li>• Simplified Menus</li><li>• In-Class Eating (Elem)</li><li>• Staggered cafeteria usage</li><li>• Identification of other areas to eat</li><li>• Signage/Community Outreach</li></ul>	<b>Traffic</b> <ul style="list-style-type: none"><li>• Signage/Community Outreach</li><li>• Supervision of busing/hallways</li><li>• Partnership with IPD</li><li>• Managed Passing Routines</li></ul>
<b>Transportation</b> <ul style="list-style-type: none"><li>• Parent Survey/Opt-In</li><li>• New Routes</li><li>• Signage/Community Outreach - walking campaign</li></ul>	

# Operations



## Challenges Identified:

- Additional transportation costs and time to get to school
- Need for additional supervision when separating students & traffic management
- Social Distancing Barriers - not enough desks!
- Availability/Cost of needed materials
- Legal issues
- Time to plan without definitive guidance

# Next Steps

- Sub-committees to continue their work over the next 2 weeks
- Present final recommendations to Steering Committee on July 13th
- District Administration to draft Reopening Plan and receive feedback from the Steering Committee and school and department leaders
- Share Reopening Plan with the Board of Education
- Present Reopening Plan to the school community
- Socialize Plans with the school community